

USB Skype Diverter



Divert calls between Skype and PSTN

1. Instruction

1.1 Summary

While you are out, the USB Skype Diverter will divert all incoming Skype calls to your mobile phone, and it'll divert your PSTN calls to Skype, you can make calls to Skype contacts and make calls to any phone all over the world via Skypeout by your mobile phone. You can take advantage of Skype and SkypeOut anywhere and anytime.

1.2 Features

1. Support "Call divert" function (Skype divert to PSTN and PSTN divert to Skype)
2. PSTN Voice Mail function
3. Send/Receive both Skype calls and regular PSTN calls
4. Phone rings for all incoming Skype and PSTN calls
5. Sound card not needed, echo cancellation, noise reduction

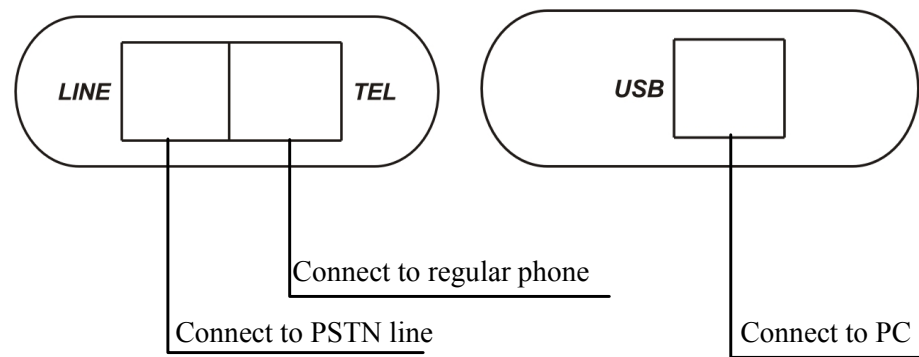
1.3 System Requirements

1. Windows 2000 or XP
2. 400MHz processor and free USB1.1 or USB2.0 port
3. 128MB RAM and 15MB free disk space
4. Any broadband connection or minimum 33.6 Kbps dialup

1.4 Package Contents

1. One USB Skype Diverter
2. One USB Cable
3. One Telephone Cord
4. One User Manual
5. One Installation CD

2 Physical Features



3 USB Diverter Installation

3.1 Install the Skype Software

Note: If you have previously installed the Skype software, proceed to **3.2**

- Insert your Installation CD into the CD-ROM drive of your computer.
- Click **Install Skype software**. You must have a connection to the Internet since you will need to download this software

from the Skype Website. Follow the on-screen instructions to install and launch the Skype software.

- After downloading the software, you will need to create a Skype account. Follow the on-screen instructions.

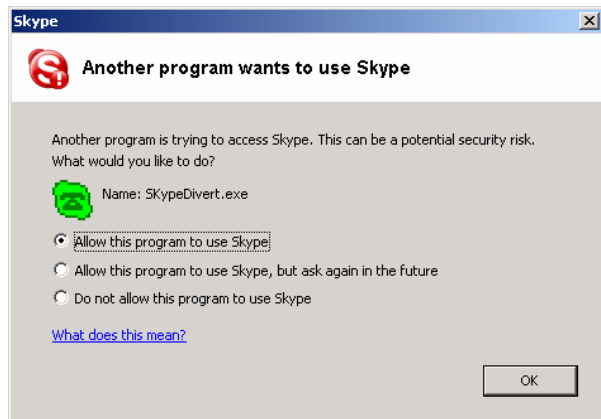
3.2 Connect your USB Diverter



- Connect the USB Diverter to an available USB port on your computer with the USB Cable
- Connect the USB Diverter to the PSTN line
- Connect a telephone set to the USB Diverter with the telephone cord
- When you see the POWER and PSTN indicators are activated, that indicates the USB Diverter is connected successfully.


3.3 Install the USB Diverter Software

- Insert your Installation CD into the CD-ROM drive of your computer.
- Click **Install SkypeMate software**. Follow the on-screen instructions to install the USB Diverter software.
- After installing the software, you will be prompted that another program wants to use Skype. Select **Allow this program to use Skype** and click OK.



4 Basic Function

4.1 Skype Divert to PSTN

- (1) Right click the icon  on the taskbar and select **Divert**.




- (2) The window shown as below:



- (3) Select **Skype to Phone** to enable the function.
- (4) Set the phone number you would like to divert, in the **Divert to** box. e.g, domestic 5702000, international 00865925702000
- (5) Test the function by doing following steps
 - Call in from Skype, the phone rings

- After 3 rings, all 3 indicators are activated and forward the call to diverted number

4.2 PSTN Divert to Skype

- Right click the icon  on the taskbar and select **Divert**



- The window shown as below:



- Select **Phone to Skype and PSTN VoiceMails** to enable this function
- Set password (required) at the **Phone password** box. e.g.: 123 (minimum 1 maximum 6)
- Test the function by doing following steps
 - Call your USB Diverter Line from your mobile phone, and then the phone is ringing
 - After 3 rings, all 3 indicators are activated. A voice message can be heard through the mobile phone.
 - Enter your password followed by #(eg:123#) to select the divert function.
 - When you hear the dial tone, enter the Speed-Dial number of your Skype contacts followed by #.

4.3 Make PSTN/Mobile Calls

- Dial the phone number.

4.4 Make Skype Calls

- You will first need to have a list of contacts in Skype. In Skype, click **Add a contact** and follow the on-screen instructions to add a new contact.
- Set up the speed-dial function
 - Right click on contact.

5 Advanced

5.1 Set Skype to Phone Divert features

Open the **Divert** window, there are 4 relative features, see below:



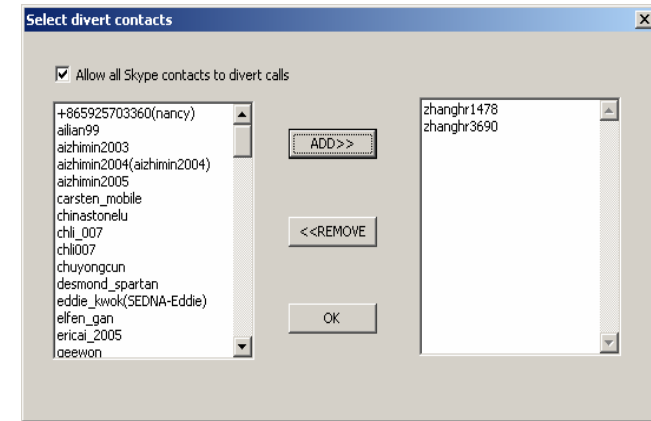
(1) **Skype to Phone:** Enables the **Skype to Phone Divert** function, unselected, disable the function.

(2) **rings, then divert:** How many rings before diverted.

(3) **Divert to:** If a phone number is set here, the incoming call will be diverted to this phone always. It can be a PSTN phone number or your mobile phone number.

If the Divert to box is left blank, you can place call to any phone number when hear the dial tone or see the message, "I am out, call me later"

(4) **Select Contacts:** Click **Select Contacts** button to open the window, see below:



There are two boxes: the right one and the left one. The left one displays all your contacts. The right one lists the contacts calls that will be diverted.

You may add contacts from the left box to the right box or remove contacts from the right box.

Note: The default setup is allowing all contact calls to be diverted.

5.2 Set Phone to Skype and PSTN VoiceMails features

Open the **Divert** window. There are 3 features relative to the **Phone to Skype and PSTN VoiceMail** function , see below:




(1) **Phone to Skype and PSTN VoiceMails:** Enables the **Phone to Skype and PSTN VoiceMails** function, unselected, disable the function.

(2) **rings, then divert:** How many rings before playing VoiceMail.

(3) **Phone password:** Use for ID confirmed. The call will be diverted if you enter the correct password. It can't be left blank.

5.3 Normally Setup

Right-click the USB Phone icon  and click **Advanced**. This will open **Advanced** window. In this window you can configure the following options:

- Select or unselect the **Outgoing call displays Skype window**. If you select this feature, a Skype window will appear when you place a call.
- Select or unselect the **Run when Windows starts** feature. If you select this feature, the USB Phone utility will automatically launch when your computer is turned on.
- Choose 1 of the 2 channels as the default channel. When you finished adjusting these settings, click **OK** for the changes to take effect.

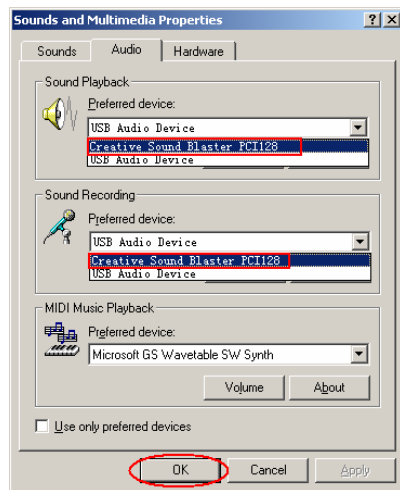
6 FAQ

Problem 1

I am not able to hear any sound through the earphone?

Solution

Please execute the “Control Panel->Sound and Video (🔊)
->Audio”, set **Sound Playback** and **Sound Recording**'s
preference device to your sound card. See below:

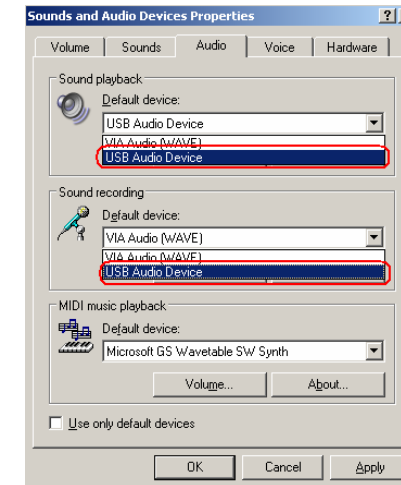


Problem 2

I can't play music through the USB Skype Diverter?

Solution

Please execute the “Control Panel->Sound and Video (🔊)
->Audio”, set **Sound Playback** and **Sound Recording**'s
preference device to “USB Audio Device”.

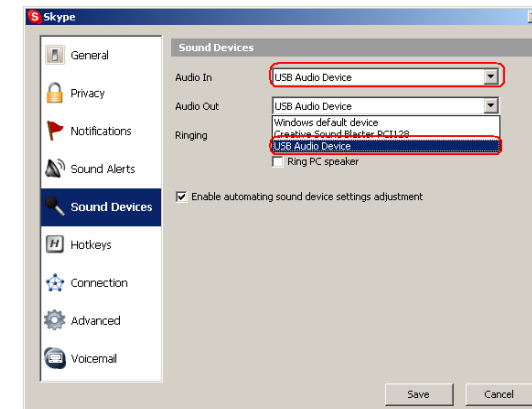


Problem 3

The voice is played from the PC's sound card instead of the
USB Skype Diverter when I make/answer a call?


Solution

Execute “Tools->Options->Sound Devices” to open the
window as below:



Set “Audio In” and “Audio Out” to “USB Audio Device”.

Problem 4

Skype is running, but the icon of SkypeMate still show as  (the phone is green and the outside is grey)?

Solution

You have selected the wrong option, go to Skype, execute choose “Tools-> Options-> Privacy-> “Manage other programs’ access to Skype”, choose the needed option, click “Change” button to open the “Manage API Access Control” windows, and make another selection.